

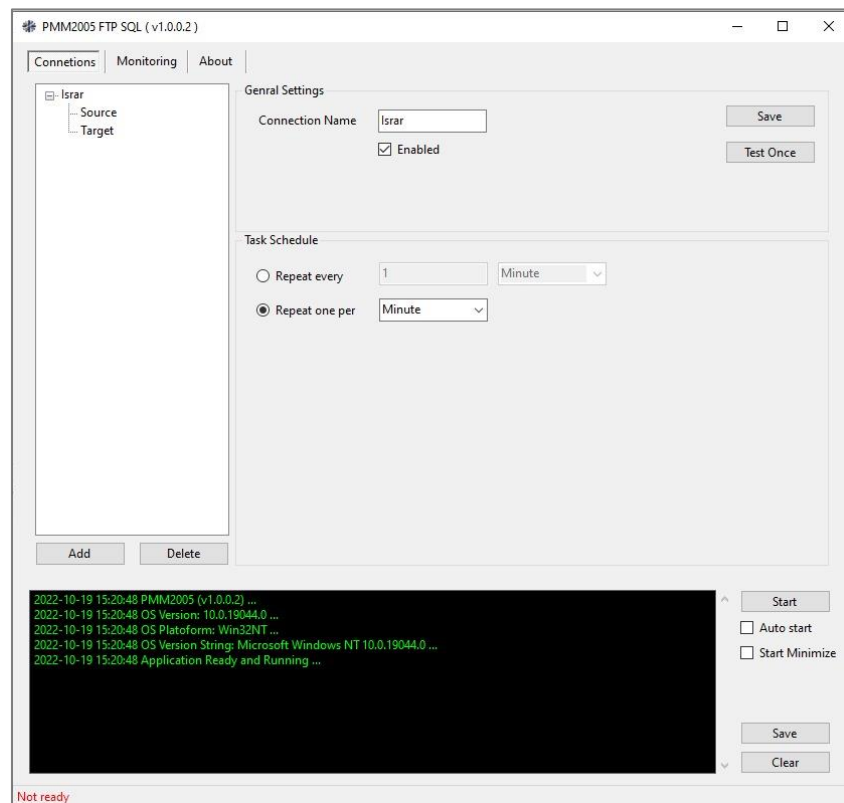


Power Meter Monitor

**Business and Mission-
Critical Solutions Provider**

FTP-SQL-FOLDER Sync

User Manual



Model: PMM2005

Document: User Manual

Document version: 1.0

Date: October 2022



COPYRIGHT NOTICE

The information in this document is subject to change without prior notice to improve reliability, design, and function and does not represent a commitment on the part of the manufacturer.

In no event will the manufacturer be liable for direct, indirect, special, incidental, or consequential damage arising out of the use or inability to use the product or documentation, even if advised of the possibility of such damages.

This document contains proprietary information protected by copyright. All rights are reserved. No part of this manual may be reproduced by any mechanical, electronic, or other means in any form without prior written permission of the manufacturer.

TRADEMARKS

All registered trademarks and product names mentioned herein are used for identification purposes only and may be trademarks and/or registered trademarks of their respective owners.

AMI is a trademark of American Megatrends Inc.

Intel & Atom are trademarks of Intel Corporation

IBM, PC/AT, PS/2&VGA are trademarks of International Business Machines Corporation Microsoft Windows is a trademark of Microsoft Corp. RTL is the trademark of Realtek Semiconductor Co., Ltd.

DECLARATION OF CONFORMITY

This restriction is subject to protect the operational process of the system in the business environment, which will produce, use, and transmit radiofrequency energy. Harmful interference to radio communication could result if instructions to the correct installation and usage were not applied. The interference prevention cannot be guaranteed even with proper installation according to the manual. If the device causes a bad effect on the radio / TV signal. The user could preclude that by turning the device on/off.

When this device produces some harmful interference, the user can use the following measure to solve the interference problem:

1-Setting the receiving antenna's direction or location to increase the distance between this device and receiver.

2-Plug in the device's power connector into different circuits of the power outlet with the receiver.

3-If any technical support is needed, the dealer or experienced radio/TV technical personnel must be informed.

TECHNICAL SUPPORT AND SERVICE

Visit Pmm-usa.us to browse FAQs and get further details.

User should collect the following information before submitting technical support and service requests:

- Product name, model and serial number.
- Installed software (operating system, OS version, installed applications and so on).
- Full description of the problem
- Detailed information about every error.

SAFETY INSTRUCTIONS

- Only trained and qualified personnel can install, operate, or maintain the device.
- Before starting the installation, all safety precautions must be read, and warning labels affixed to the device must be observed. Doing so protects the device from damage and ensures your safety.
- Safety precautions provided in this document may not cover all safety aspects, note to always remain mindful of safety.
- PMM is not liable for any consequence that results from violation of regulations pertaining to safe operations or safety codes pertaining to design, production, and equipment usage.
- DO NOT use liquids or decontamination spray to clean the device surface and assure that it is totally disconnected while cleaning.
- Take all measures to prevent device drop before or during installation.
- Prior to connecting the device to power source, ensure the source and device voltage and power are 100% matched.
- Keep the cables in a suitable covered place.
- If the device is not used for a long time, shut off the power to avoid the damages by transient overvoltage.
- DO NOT allow any liquid flow into the device; to avoid fire or short circuit.
- The recommended storage temperature range should NOT be less than 30°C OR higher than 85°C.



Warning:

- Read the power source and device inlet carefully.
- Handle device with both hands.
- Clean and maintain the device using recommended, safe and suitable methods.



Caution:

If any unauthorized changes of settings or repairs are done without PMM approval; then user's rights of controlling this device will be canceled.

Contents

- 1. INTRODUCTION.....4
 - 1.1 Description.....4
 - 1.2 Key Features4
- 2. FTP-SQL-FOLDER SYNC.....4
 - 2.1 Connections4
 - 2.2 Source Settings5
 - 2.3 Target Settings.....8
 - 2.4 Monitoring.....10
 - 2.5 About10

1. INTRODUCTION

This Document is a fully descriptive operational manual for PMM's FTP-SQL-FOLDER Sync software. Providing the operator with the needed information in terms of instructions and screen layout allowing for easy use.

1.1 Description

PMM FTP-SQL-Folder Sync is robust, flexible and easy to use data transferring application that was initialized and developed by PMM. The software supports many sources types, including FTP, Database, API and Local folder. Additionally, the application supports many templates, for instance, the template of GBM and MeteoControl are included. The data can be transferred automatically every specific period of time, based on user preferences. Each user has it is unique monitoring window and all connections can be monitored precisely. All commands can be followed up by the black console located at the bottom of the application page.

1.2 Key Features

- Supports many data sources
- Can be initiated automatically based on user preferences
- Supports many data templates
- Flexible data transferring timing and period
- All connections can be monitored and followed up
- Work smoothly on the background

2. FTP-SQL-FOLDER SYNC

2.1 Connections

General Settings

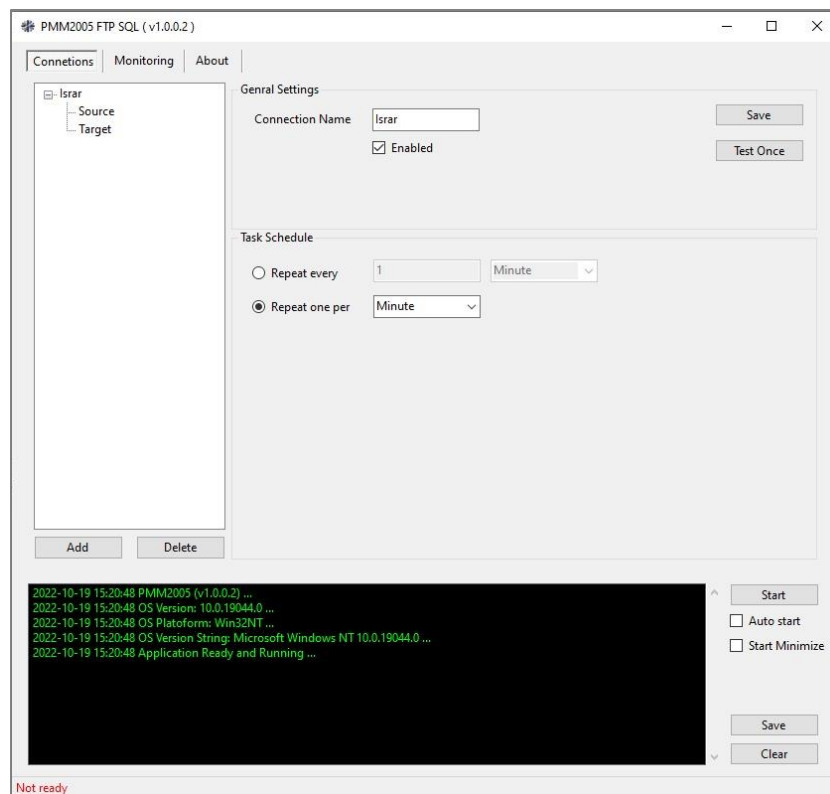
- A new connection can be added by clicking the "Add" icon below the Connections tree bar.
- Old connections can be deleted also, using the "Delete" button right next to the "Add" button.

To add a new connection:

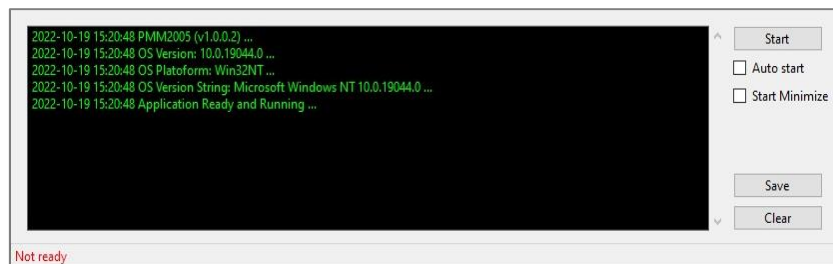
- Type the connection name.
- Check the "Enabled" box to enable the connection.

Task Schedule

- The user can choose whether the data to be repeated every selected time period
- Or repeated one per (Minute, Hour. etc)
- Click on "Save" to save the connection.
- Click on "Test" to test the connection setting whether they have been set correctly or not.



- Start the reading process by clicking on the "Start" button right next to the console window
- Check the transferring process from the console window
- Click on the "AutoStart" button to start the transferring automatically whenever the application is opened
- Use "Save" button to save the traffic in log file



2.2 Source Settings

- Choose the source type: FTP, Database, API or local folder.
- Choose the data format: CSV, XML or JSON
- Choose the desired template

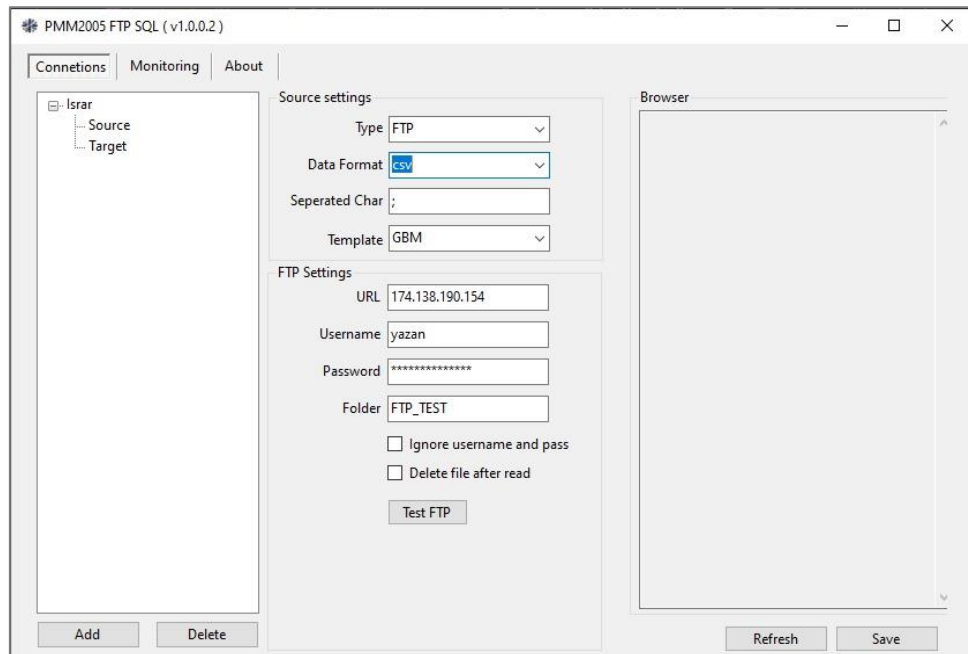
Note: each type has its own settings that differs from others.

The FTP source type:

- Type the "URL, User name and Password"
- Click on "Ignore Username and Pass"
- Check "Delete file after read" if you do not want to keep the file saved after reading

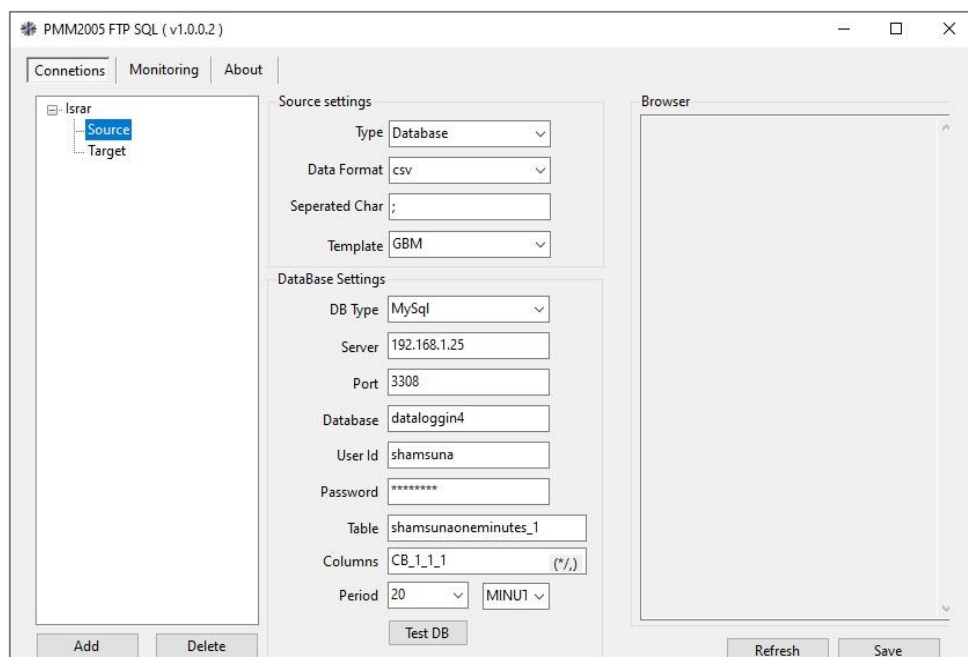
To test FTP folder:

- Click on “Test FTP”
- All data files will appear at the Browser window
- Click on “Save” button, to save the source settings



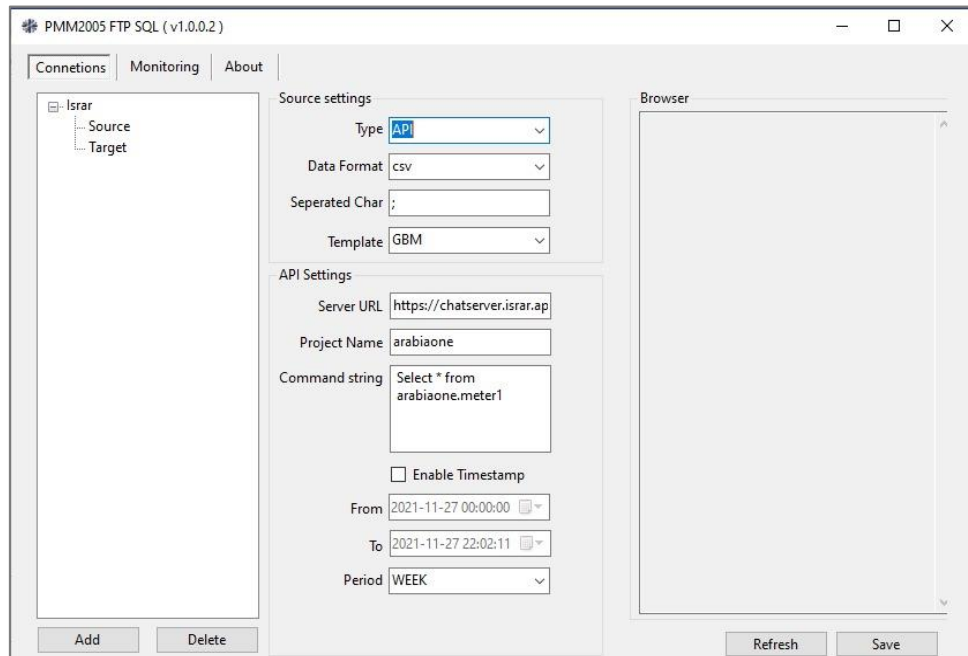
The Data Base source type:

- Click on “DP Type” and choose whether it is “MYSql or SQLite”
- Type the server’s name, Port, Database, ID and Password
- Write the required tables and Columns names or type "*" if all tables and columns are required
- Choose the period in which the files have been saved that you want to read
- Click on “Save” button, to save the source settings



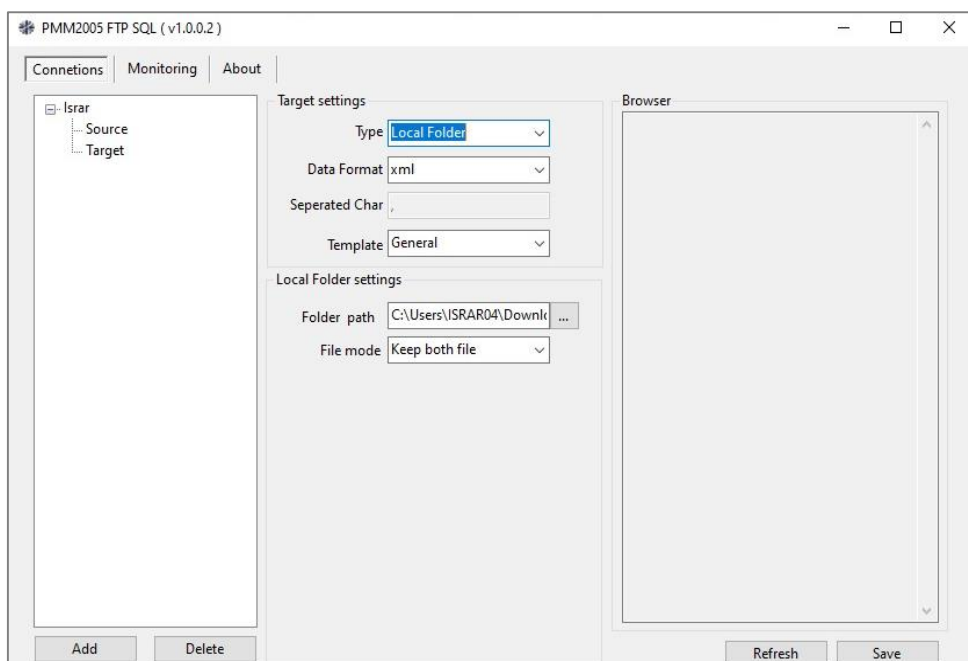
The API source type:

- Type "the Server URL, Project Name and Command string"
- Type "*" in the Command String to get all files
- Click "Enable Timestamp" to choose the dates (From-To)
- Click on "Save" button, to save the source settings



The Local File source type:

- Click on "Folder name to browse the folder location"
- Click on "Selected file" to choose whether you want the last file or all files
- Click on "Save" button, to save the source settings



2.3 Target Settings

- Choose the target type: FTP, Database or local folder.
- Choose the data format: CSV, XML or JSON
- Choose the desired template

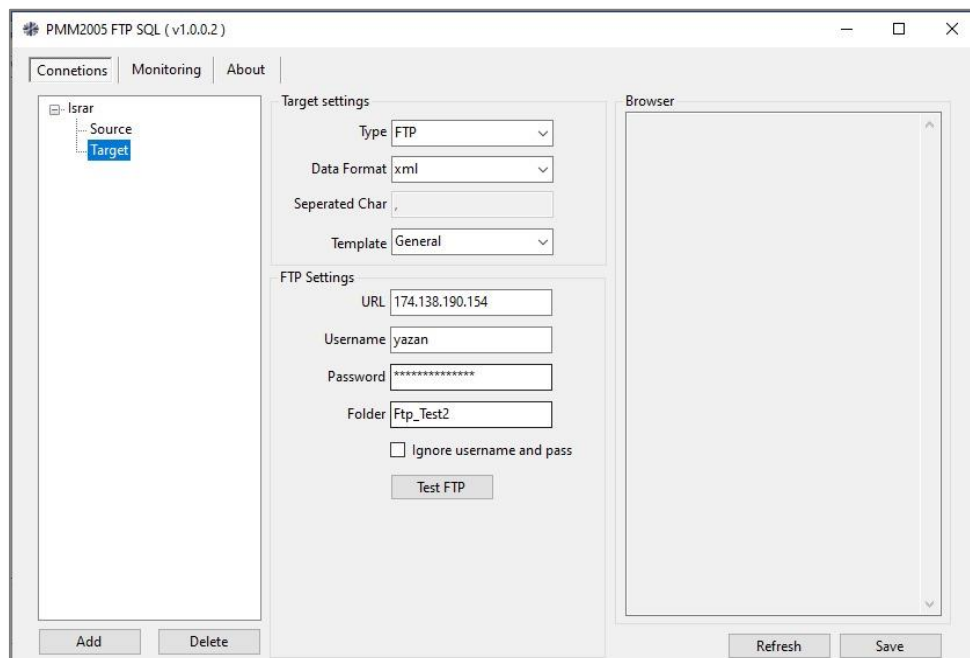
Note: each type has its own settings that differs from others.

The FTP target type:

- Type the "URL, User name and Password"
- Click on "Ignore Username and Pass"
- Check "Delete file after read" if you do not want to keep the file saved after reading

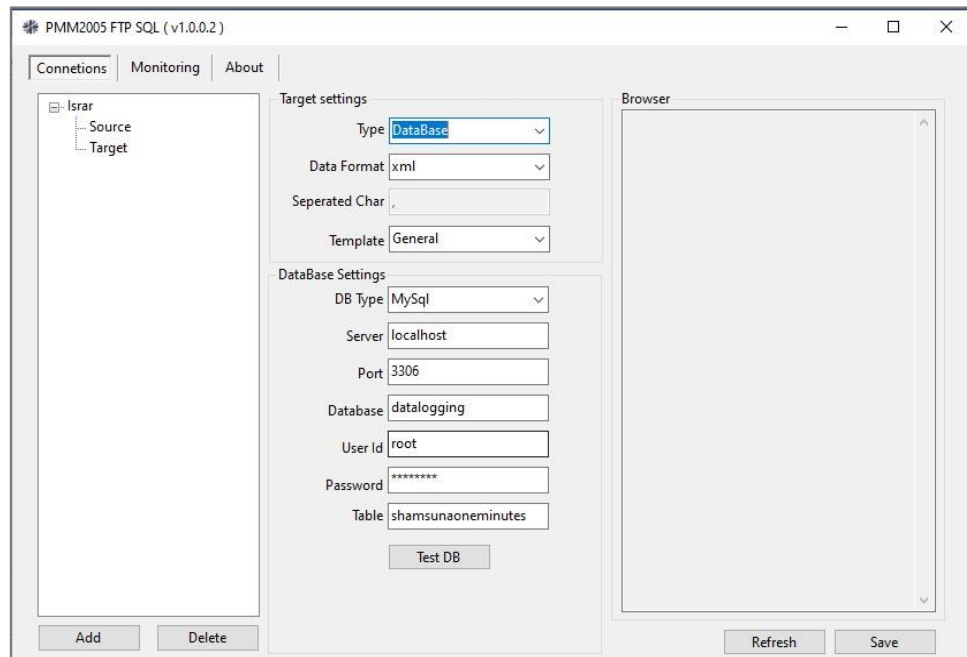
To test FTP folder:

- Click on "Test FTP"
- All data files will appear at the Browser window
- Click on "Save" button, to save the source settings



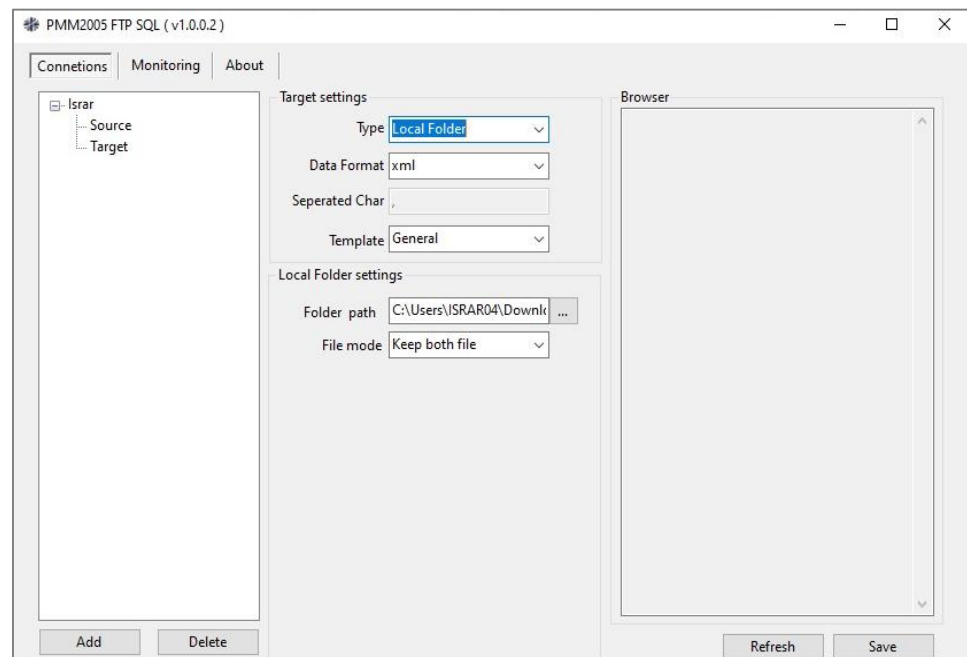
The Data Base target type:

- Click on "DP Type" and choose whether it is "MYSql or SQLite"
- Type the server's name, Port, Database, ID and Password
- Write the required tables and Columns names or type "*" if all tables and columns are required
- Choose the period in which the files have been saved that you want to read
- Click on "Save" button, to save the source settings



The Local File target type:

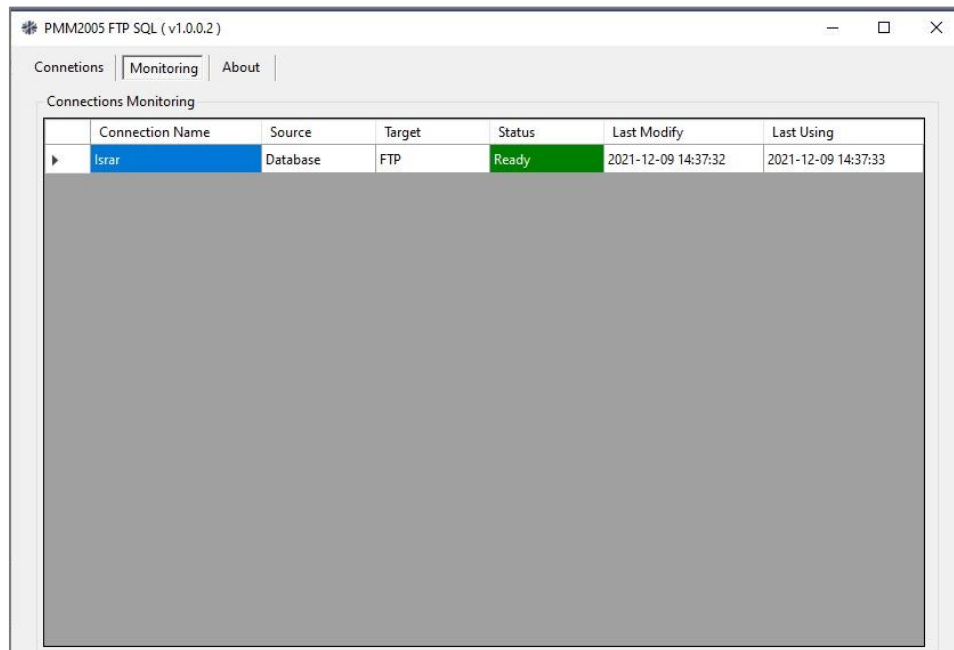
- Click on "Folder name to browse the folder location"
- Click on "Selected file" to choose whether you want the last file or all files
- Click on "Save" button, to save the source settings



2.4 Monitoring

Monitor the status of each connection and what is the last Modify

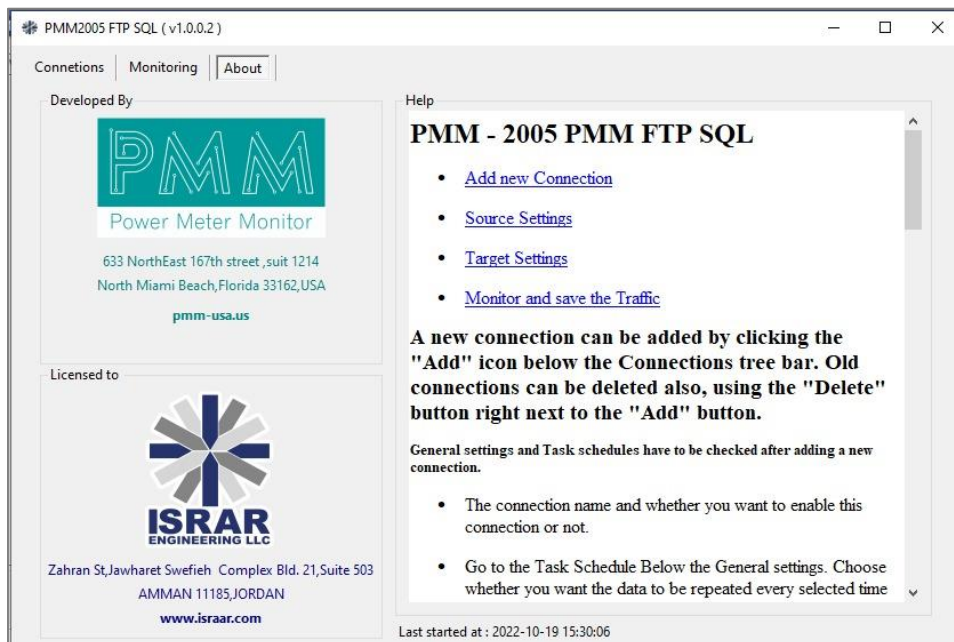
- Monitoring displays: connection name, source type, target type, status, last modify date and last using date as shown below



Connection Name	Source	Target	Status	Last Modify	Last Using
Israr	Database	FTP	Ready	2021-12-09 14:37:32	2021-12-09 14:37:33

2.5 About

- About page displays general information about the software. In addition, to the “Help” which contains the main instructions for using the software.



Developed By

PMM
Power Meter Monitor

633 NorthEast 167th street, suit 1214
North Miami Beach, Florida 33162, USA
pmm-usa.us

Licensed to

ISRAR
ENGINEERING LLC

Zahran St, Jawharet Swefieh Complex Bld. 21, Suite 503
AMMAN 11185, JORDAN
www.israar.com

Help

PMM - 2005 PMM FTP SQL

- [Add new Connection](#)
- [Source Settings](#)
- [Target Settings](#)
- [Monitor and save the Traffic](#)

A new connection can be added by clicking the "Add" icon below the Connections tree bar. Old connections can be deleted also, using the "Delete" button right next to the "Add" button.

General settings and Task schedules have to be checked after adding a new connection.

- The connection name and whether you want to enable this connection or not.
- Go to the Task Schedule Below the General settings. Choose whether you want the data to be repeated every selected time

Last started at : 2022-10-19 15:30:06